



Creating Kezzie

All Kezzie's parts may look bewildering at first, but if you exercise patience and perseverance, you can bring her to cardboard life. :)

What you'll need:

Scissors to cut the pieces out.

An **exacto or razor knife** to cut the slots for inserting the mane and tail.

Strong, fast-drying **glue**. A glue gun would work well if you're able to use one. *(I used an Extreme Elmer's glue stick and the Scotch Tacky Glue pictured here.)*

Tape - I used scotch tape on the insides to help hold things together as the glue dried.

A helper - It's difficult to bend/fold, glue, and hold everything together all at once. If you have someone to assist you, things will likely go more smoothly.

Wipes/paper towels - I kept getting glue all over my fingers as I worked on putting this together. Maybe you're neater than I am, but I found myself frequently wiping glue off my fingers.



sonrisestable.com

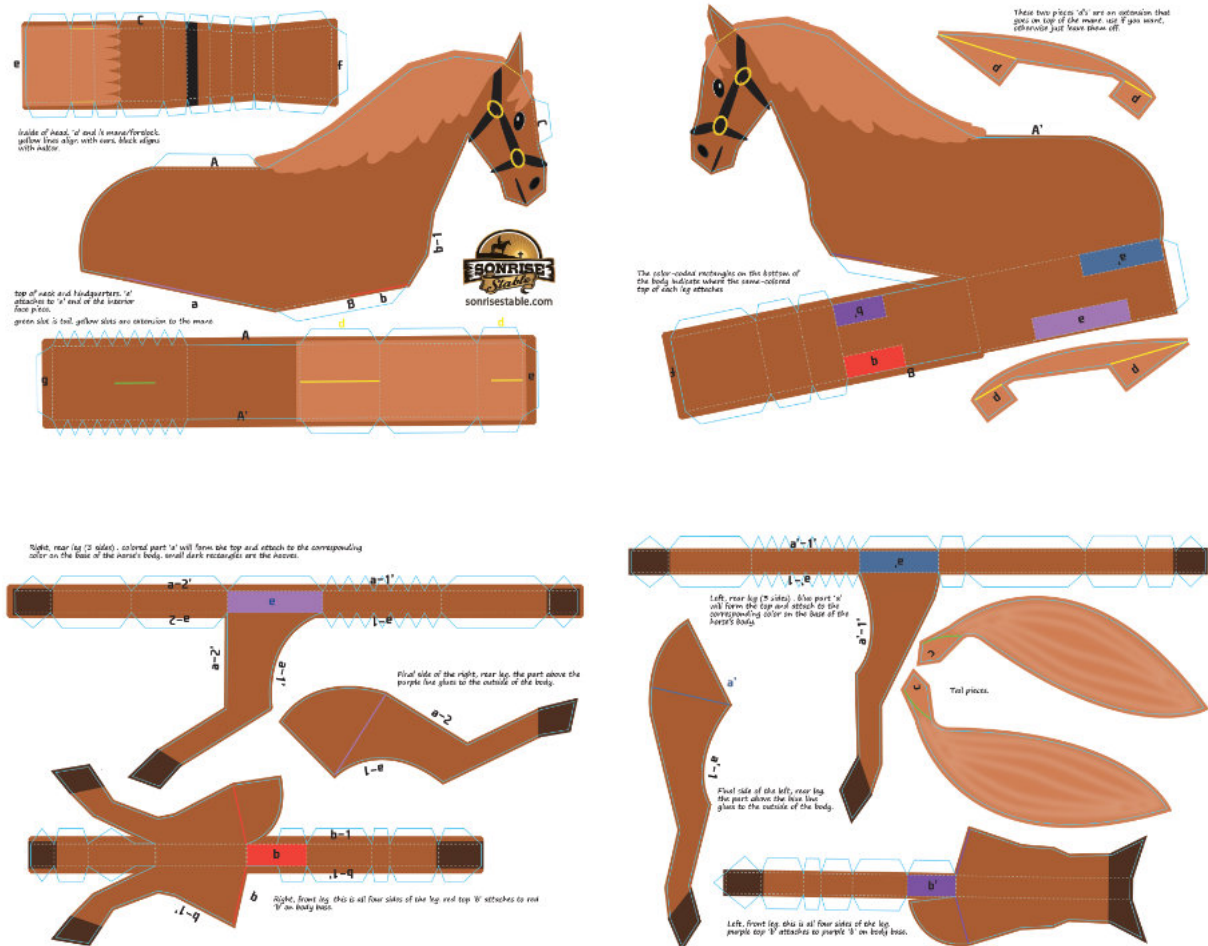
Creating Kezzie

There are four pages for Kezzie as shown below. Read the descriptions on the pages for the various parts before cutting, so you're familiar with what each part is. There's no single, correct way to put this together, but I'll explain how I did it. Once you've completed one model, you'll feel comfortable with how it's done and may have ideas for how to do it better.

Cut each part out along the light blue lines. When cutting, if you'll cut off an identifying letter, first jot that letter on the opposite side of Kezzie at the same position. The letters help identify the alignment of pieces.

Most of the **dashed lines are fold lines.** Do not cut those. The colored, rectangular boxes on the bottom of the body have dashed lines also, but those do not fold.

Cut all the parts out and group like pieces together (legs, body, etc.) It can take a while to cut everything. If you'll continue the project at a later time, store everything in a plastic bag so you don't lose any of the pieces.



Creating Kezzie

Next, I made the folds for each part. The pieces that have lots of small triangles are parts that will fold into a curve, like the horse's hindquarters.

Here are all the parts cut out and showing the preliminary folds I made. If you fold these without gluing, you can preview how the parts fit together.

My overall strategy was:

- Assemble all four legs
- Assemble the body
- Attach the legs to the body



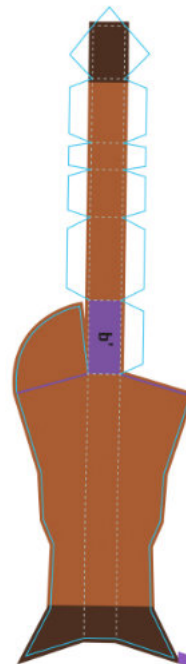
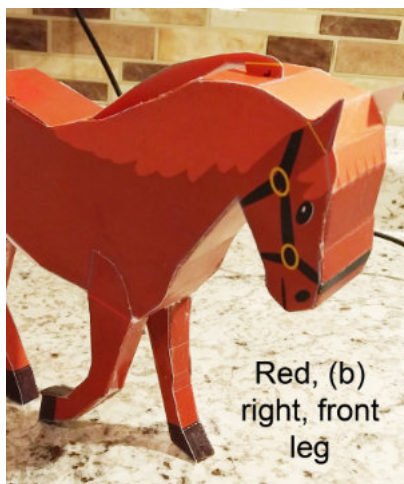
Right and Left Front Legs

These two legs are the easiest. The entire leg is contained in one piece. For the left, front leg (purple, b') fold the white tabs over and fold along the two long, dotted lines along the leg. The section with the white tabs will form the inside of the leg.

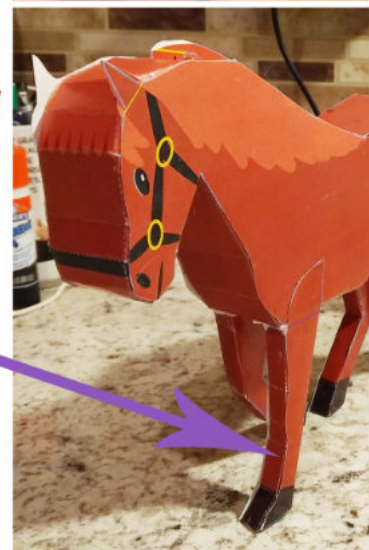
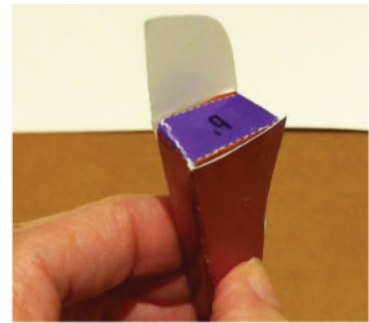
Don't fold at the purple line. The purple rectangle will be at the top of the leg. Later, you'll glue that to the corresponding rectangle on the body. The circular flap above the purple section will attach to the outside of the horse's body.

The right, front leg has more of a bend, but is constructed in the same way.

Apply the glue to the white tabs and the outer edge of the inside of the legs, then fold it all into the shape of the leg and hold until dry.



Left, front
leg



Create these two legs, then set them aside until time to attach them to the body.

(I'm showing the full body in these photos so you can see where each leg goes. You won't have the body assembled yet.)

Creating Kezzie

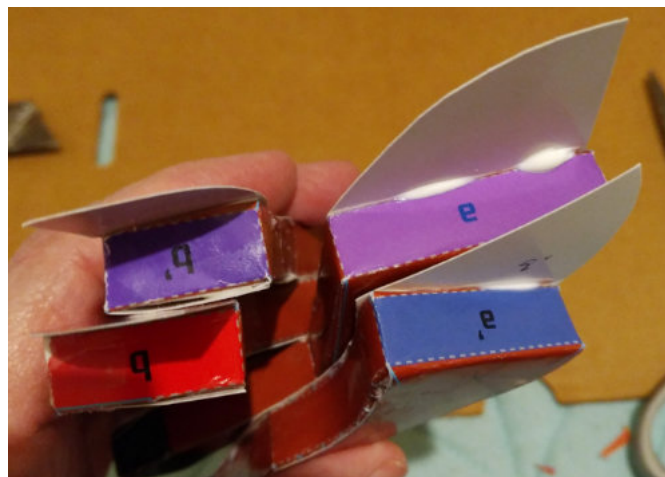
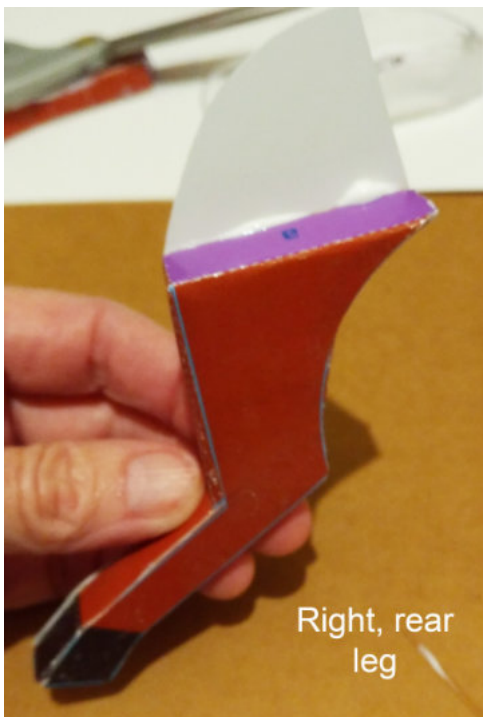
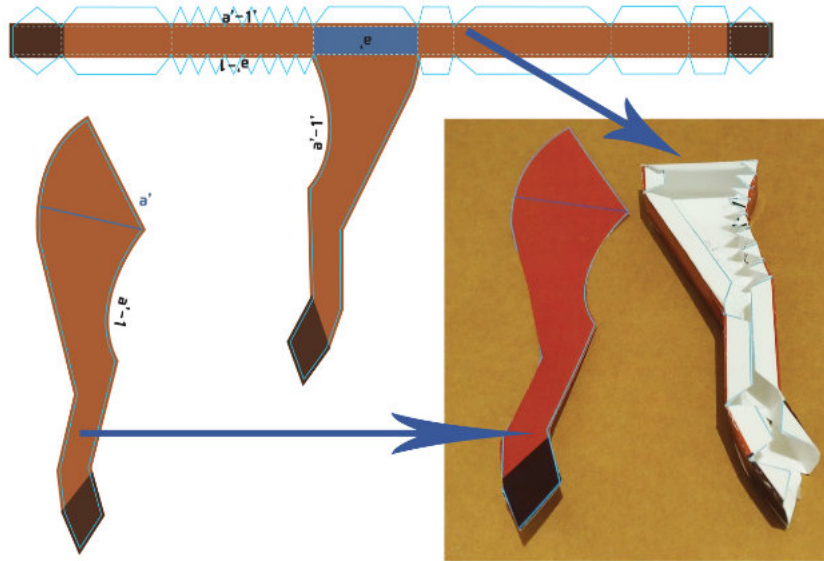
Back Legs

These back legs are formed in two steps. The image to the right shows the formation of the left, rear leg (blue a').

Fold the piece with the blue rectangle to form three sides of the leg as shown.

The outer piece (a' 1) is then glued to the 3-sided piece. The blue line on the outer piece aligns with the top of the leg.

When I attached this leg to the body, I didn't get it aligned properly to the body as you can see in the photo. There shouldn't be the gap between the upper leg and the hindquarters.



The other back leg is formed using the same two-step process.

At this point you should have all four legs completed.

Creating Kezzie

Body

Before you create the body, you may want to color the inside of the ears on the two body sides reddish brown to match Kezzie's coat color.

Glue the two sides of the tail together in preparation for attaching it later.

Fold the lower part of the body up and glue to the lower body and neck.

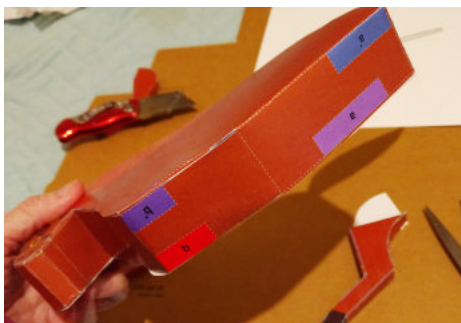
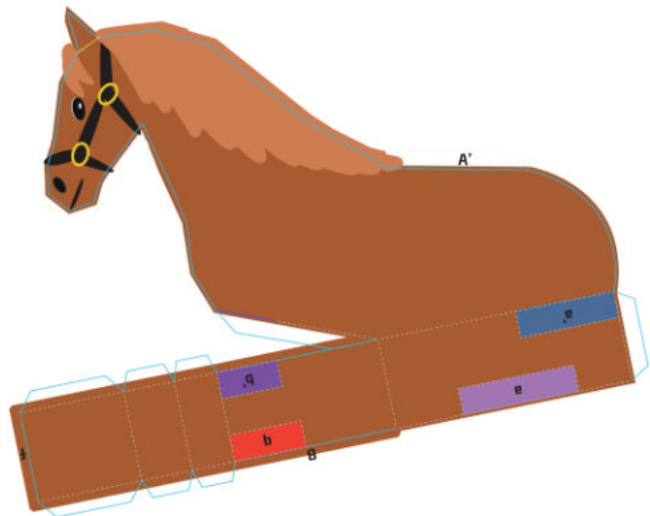
Attach the rectangular strip that has the green (tail) and two yellow (mane) slots. Make sure you have cut a hole in these slots first. The green end (tab g) attaches to the lower body at the back. Curve the piece up over the body and neck.

Next attach the part that forms the interior of the head. The 'a' end will meet the part you attached over the neck. The black line should align with the halter. The piece then wraps under the head and attaches to the piece under the neck.

At this point, you'll have three sides of the body formed. This is where you can apply some tape if needed. It won't be seen inside the body.

It's easiest to insert the mane and tail pieces at this point while you still have access to the inside. This will allow you to tape them in place on the inside.

Then attach the other side of the horse. When the body is dry, all that's left is to attach the legs. Just match the color at the top of the leg to the color on the body base. Glue at the rectangles and the flaps that attach to the sides of the body. I flipped mine upside down until the glue was completely dry. You can see I use a lot of glue :)



If the legs are uneven and Kezzie doesn't stand well, you can create a rectangular base out of cardboard and attach her to that.

